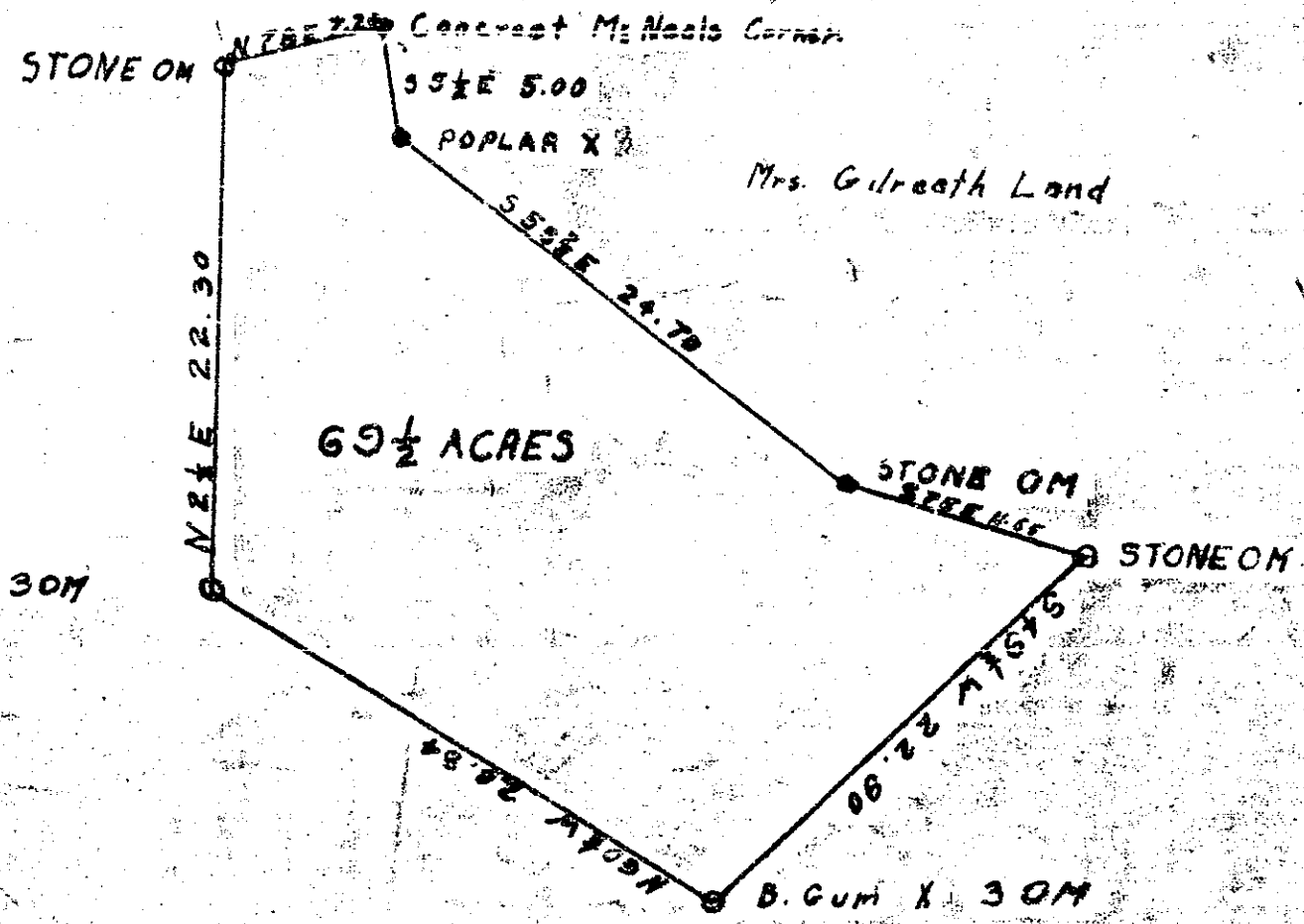


Plat Book I, Page 10 B

South Carolina
 Greenville County
 By the request of H. P. McGee, I
 surveyed this tract of land on
 Paris Mt. and find it to contain
 69 1/2 Acres
 Surveyed 1928
 W. A. Hester L.S.



PINE X 30M

SCALE 100 chains = 1"

Recorded by John New 5/15/37

FILED TO BE 15 DAY OF May 1937
 AND RECORDED IN VOL. 111 P. 10
 AT PAGE 10
 Allie Farnsworth
 # 6468